



OWNER'S MANUAL
FOR THE



SPRAY-ON 200 range

C-Dax Ltd
PO Box 1010, 145 Harts Road
Tiritea, Palmerston North
Ph:06 354 6060
Fax:06 355 3199
E-Mail: sales@c-dax.co.nz
www.c-dax.com

SAFETY PRECAUTIONS

TRAILED SPRAYERS

AN IMPORTANT MESSAGE FOR OWNERS & OPERATORS OF C-Dax ATTACHMENTS/ACCESSORIES

Be warned of the dangers of loading your vehicle in excess of its carrying capacity.

It is important to understand that any loads or attachments whether fastened to or placed on a vehicle will alter the stability or handling characteristics of that vehicle.

Spray tanks or other equipment must be filled only to a level where the gross weight is within the load limit of the vehicle.

Safety is a primary concern in the design, manufacture, sale, and use of spray tanks and other equipment. As manufacturers of spray tanks and other equipment we want to confirm to you, our customers, our concern for safety. We take this opportunity to remind you about the simple, basic and common sense rules of safety when using spray tanks and other equipment. Failure to follow these rules can result in severe injury or death to operators and bystanders.

It is essential that everyone involved in the assembly, operation, transport, maintenance and storage of this equipment be aware, concerned, prudent and properly trained in safety.

This also applies to equipment that is loaned or rented to someone who has not read the owner's manual and is not familiar with the operation of application equipment.

- NEVER EXCEED THE LOAD LIMIT CAPACITY OF THE ATV OR OTHER VEHICLE.
- ALL ATV AND TRAILED EQUIPMENT TYRES SHOULD BE INFLATED TO MANUFACTURERS RECOMMENDED OPERATING PRESSURES.
- PLEASE NOTE THAT FILLING THE SPRAY TANK OR OTHER EQUIPMENT COMPLETELY AND OR THE ATTACHMENT OF ADDITIONAL EQUIPMENT TO THE ATV MAY EXCEED THE ATV'S MAXIMUM LOAD CAPACITY AND IT IS NOT RECOMMENDED TO EXCEED MANUFACTURERS GUIDELINES
- CARGO SHOULD BE PROPERLY DISTRIBUTED AND SECURELY ATTACHED.
- REDUCE SPEED WHEN CARRYING CARGO OR PULLING A TRAILER OR TRAILED APPLICATION EQUIPMENT AND ALLOW GREATER DISTANCE FOR BRAKING.
- NEVER ALLOW ANYONE TO RIDE ON YOUR SPRAYER OR OTHER EQUIPMENT.
- ALWAYS FOLLOW THE INSTRUCTIONS IN THE OWNER'S VEHICLE MANUAL FOR CARRYING CARGO OR PULLING A TRAILER.
- PROPER MAINTENANCE IN LINE WITH MANUFACTURER'S RECOMMENDED MAINTENANCE PROCEDURES IS ESSENTIAL.
- BEFORE APPLYING CHEMICALS, READ THE LABEL OF THE CHEMICAL MANUFACTURER OR SUPPLIER FOR PERSONAL PROTECTIVE EQUIPMENT AND OPERATE AS RECOMMENDED.

THE SAFETY OF ALL CHEMICALS USED IN AGRICULTURE IS UNDER THE JURISDICTION OF A GOVERNMENT AGENCY, IE N.Z. MINISTRY FOR THE ENVIRONMENT; USA ENVIRONMENTAL PROTECTION AGENCY. FURTHER LOCAL GOVERNMENT OR STATE LAWS MAY APPLY.

WARNING

To reduce the chance of VEHICLE instability, it is recommended to exercise EXTREME care while spraying on a slope or hillside.

CAUTIONS, WARNINGS and NOTES

Throughout this document, text has been highlighted as warnings, cautions and notes.

Warnings are mandatory instructions. Failure to comply with these instructions may result in injury or damage.

Cautions are advisory. Failure to comply may result in poor operation or premature failure.

Notes are to assist with convenient operation of the equipment.

SAFETY PRECAUTIONS

Warnings are mandatory instructions to prevent serious injury or permanent damage.

Cautions are advisory instructions to ensure reliable operation of the equipment.

Notes are for convenient operation.

WARNING

Making pesticides is a most dangerous time as it involves handling the concentrated material. For toxic compounds, use protective clothing such as overalls, hat, gloves, boots and respirator.

When using concentrated sprays, full protection is necessary.

When using diluted sprays, wear at least a hat, long-sleeved cotton overalls and boots. If you use pesticides regularly it is a good idea to always wear a respirator to avoid cumulative effect ... other protection may be required – check the label. It may have specific directions for that particular chemical.

Protective clothing should always be properly cared for. Rinse heavily contaminated clothes in the open before washing in the laundry.

Wash and dry these clothes every day – but keep them separate from other washing.

Respirators need special care ... clean respirator after spraying. Use soapy water then rinse and allow to dry completely before storing in a clean plastic bag. Replace canisters in respirator after every 8 hours use.

C-Dax SPRAY-ON 200

OWNER'S MANUAL

(Pt.No. 2400-6800 Issue 11, Dated July 2018)

TABLE OF CONTENTS

2	Safety Precautions
4	Table of Contents
5	Introduction
	Description
	Specifications
	Order Information
	Warranty
	Liability
7	Theory of Operation
	Operating Hints
	Spray Hose
	Nozzle Choice
	Pump
8	Chemical Application
	Chemical Advice
	Maintenance
	Cleaning
	Filters
	Pressure Switch Adjustment
	Troubleshooting
9	SO200 (Flat-deck) PARTS DIAGRAM & LIST
10	SO200 (Spot Sprayer) PARTS DIAGRAM & LIST
11	SO200T Parts List & Diagram
	HGSR Spraygun Parts Diagram
	Flojet spray pump replacement parts

CAUTION

For SO200 trailed unit fitted with knobbly tires. It is essential that these tyres are not over-inflated otherwise the unit will be exposed to excessive shock. The recommended tyre pressure is 5-7 psi. Turf tires should be inflated to 12 psi

INTRODUCTION

You have just purchased a new Spray-On 200 (SO200) spot/boom Sprayer. The Spray-On 200 sprayer incorporates many unique features that make it a useful and versatile sprayer.

DESCRIPTION

The C-Dax SO200 spot/boom sprayers are a series of high strength spray units manufactured of non-corrosive polyethylene that either come complete as a trailed unit or as a stand alone tank assembly for deck mounting.

SPECIFICATIONS

(Specifications subject to change without notice)

Capacity	205L
Power Consumption	12 VDC (12A Max)
Pump	12 VDC Flojet pump
Tank	Non-corrosive, medium density, UV stabilised polyethylene
Filtration	Triple filter system comprising; fine mesh tank strainer, large capacity 50 mesh suction filters, and spray gun/boom filter(s)
Frame	Zinc plated mild steel (trailed only)
Boom Mounting	Uprights with correct hole spacing to suit all C-Dax ATV booms (trailed only)

NOTE

For the SO200 flat deck unit we recommend that booms to go with the unit should be purchased with a Quicksmart attachment system to allow for easy mounting and height adjustment.

ORDER INFORMATION

Deck Mounted with Handgun

SO200 Pt.No. 1086

Trailed with Handgun

SO200T	<u>NZ</u> Pt.No. 1013	<u>AUS</u> Pt.No. 1013	<u>UK</u> Pt.No. 1078
--------	--------------------------	---------------------------	--------------------------

WARRANTY

3 WARRANTY AND LIABILITY

Use of the equipment

- 1.1 You must satisfy yourself as to the suitability of the equipment for your intended use(s) of the equipment.

Your relationship with the retailer

- 1.2 Where you consider you have a warranty claim (or any other claim) in relation to the equipment, you must contact the retailer who sold you the equipment, not C-Dax directly. The retailer is responsible for liaising with C-Dax in respect of your claim.

Warranty

- 1.3 C-Dax warrants to the original purchaser that the equipment is sold free from defects in materials and workmanship for a period of 12 months from date of first retail sale (6 months from date of first retail sale if the equipment is sold in the U.K.) subject to the terms set out below.
- 1.4 C-Dax will at its option repair or replace the defective equipment (or part of the equipment) or notify the retailer of the equipment to refund the purchase price for such defective equipment to you in the event of a breach of this warranty, subject to the terms set out below.

Liability

- 1.5 Except for the warranty set out in clause 1.2 above, all warranties and representations (including those expressed or implied by law) in respect of the equipment or advice relating to the equipment provided to you by C-Dax are excluded to the extent permitted by law.
- 1.6 Notwithstanding anything else in this manual, C-Dax's maximum liability to you (in the event that such liability exists) in respect of any breach of warranty, any matter set out in this manual, or for defective equipment or advice relating to the equipment provided is limited at C-Dax's option to:
- (a) repairing or replacing the equipment (or part of the equipment); or
 - (b) notifying the retailer of the equipment to refund the price for the equipment paid by you.
- 1.7 Notwithstanding anything else in this manual, in no event will C-Dax be liable, whether in contract, tort (including negligence) or otherwise:
- (a) where you have altered or modified the equipment, misused or misapplied the equipment, or the equipment has been subjected to any unusual, excessive or non-recommended use, service or handling (including as set out in this manual);
 - (b) where the equipment is not transported, stored, handled or used in accordance with any directions given by C-Dax (or the retailer) to you (including as set out in this manual);
 - (c) where the equipment:
 - (i) has been subject to neglect, accident or hireage, or the damage arises from fair wear and tear, battery damage or chemical attack;
 - (ii) has been built to a customer's specifications; or
 - (iii) has been dismantled, repaired or serviced other than by an authorised service agent of C-Dax;
 - (d) for loss or damage caused by any factors beyond C-Dax's control; or
 - (e) for any loss of profit or revenue, or for any special, indirect, incidental or consequential damage, loss or injury of any kind suffered by you.
- 1.8 Where C-Dax elects to repair or replace the equipment it will use reasonable endeavours to do so as soon as practicable but will not be liable for any delay in doing so.
- 1.9 You agree that the transactions entered into between you and the retailer (and C-Dax) are for the purposes of trade and that, having regard to all relevant circumstances of the transactions, it is fair and reasonable that the provisions of the Consumer Guarantees Act 1993 (NZ) do not apply to those transactions to the fullest extent permitted by law.

THEORY OF OPERATION

Spray fluid is prepared and placed in the tank via the lid opening and strainer basket. Foreign matter is trapped in the strainer mesh for disposal after the tank has been filled.

When the pump is switched on power is applied to the pump motor from the battery. When the pump operates, fluid is drawn through the filtered suction line and into the pump.

With each rotation of the pump motor, fluid is forced via valves into a high-pressure chamber in the pump head. Fluid exits from the chamber via a check valve into the delivery hose of the sprayer. Providing the delivery hose has an open orifice fluid will flow from the hose. If the hose is closed such as when the spray gun valve is not operated, pressure will build up in the hose and pump head.

When the spray gun valve is opened, the pressure will drop and the pump will start to operate.

OPERATING HINTS

Spray Hose

Secure the spray hose and lance in the stowed position under the two lugs of the fresh water tank as shown on the cover of this manual.

Nozzle Choice

The provided nozzles have been selected to match the performance of the pump.

- The flat fan nozzle [5300-8400] gives good atomisation without too much drift at 35PSI (2.5 bar).
- The adjustable nozzle [4000-5026] gives a solid cone pattern, ideal for spot spraying.

If smaller nozzles are used the pump will 'cycle' - turn on and off. This is accommodated by the pump but causes pressure fluctuations, and may eventually reduce pump life.

Pump

CAUTION

For best performance do not adjust the tip so fine that the pump starts to cycle. A coarser spray pattern will produce less drift.

WARNING

The SO200 has a maximum capacity of 205L. If mounting this sprayer on an ATV, check that the vehicle weight limits are not exceeded.

BOOM SPRAYING

If the SO200 is fitted to a ute or a trailer and it is too high to mount the boom correctly (Nozzles should be no higher than 500mm from the ground) simply remove the left and right mounting brackets and flip them over so that the upright arms are hanging below the deck height. Ensure, when reattaching the brackets, not to over tighten the fasteners as this may cause damage to both the tank and the frame.

CHEMICAL APPLICATION

As no control can be exercised over the use of the equipment or over weather, plant or soil conditions, or over the storage, handling, mixing, use or application of sprays or chemicals, C-Dax Ltd will not accept any liability for loss or damage (consequential or otherwise) arising directly or indirectly from the use of this equipment.

Chemical Advice

C-Dax Ltd or their agents cannot make recommendations or give advice as to the use of chemicals and cannot accept responsibility for any damage, injury or other consequence for disregarding this warning notice. Contact your chemical supplier for advice.

MAINTENANCE

Cleaning

Clean the sprayer regularly! After each use flush the unit out three times with fresh water. Use CDAX Neutralise for the second rinse.

CAUTION

To prevent damage to the sprayer and spray gun, drain the water from the sprayer and spray gun when there is a risk of frost.

Filters

The tank strainer basket is retained by the lid to assist cleaning. Always clean the strainer before filling the tank with spray solution.

Clean all filter screens regularly.

NOTE

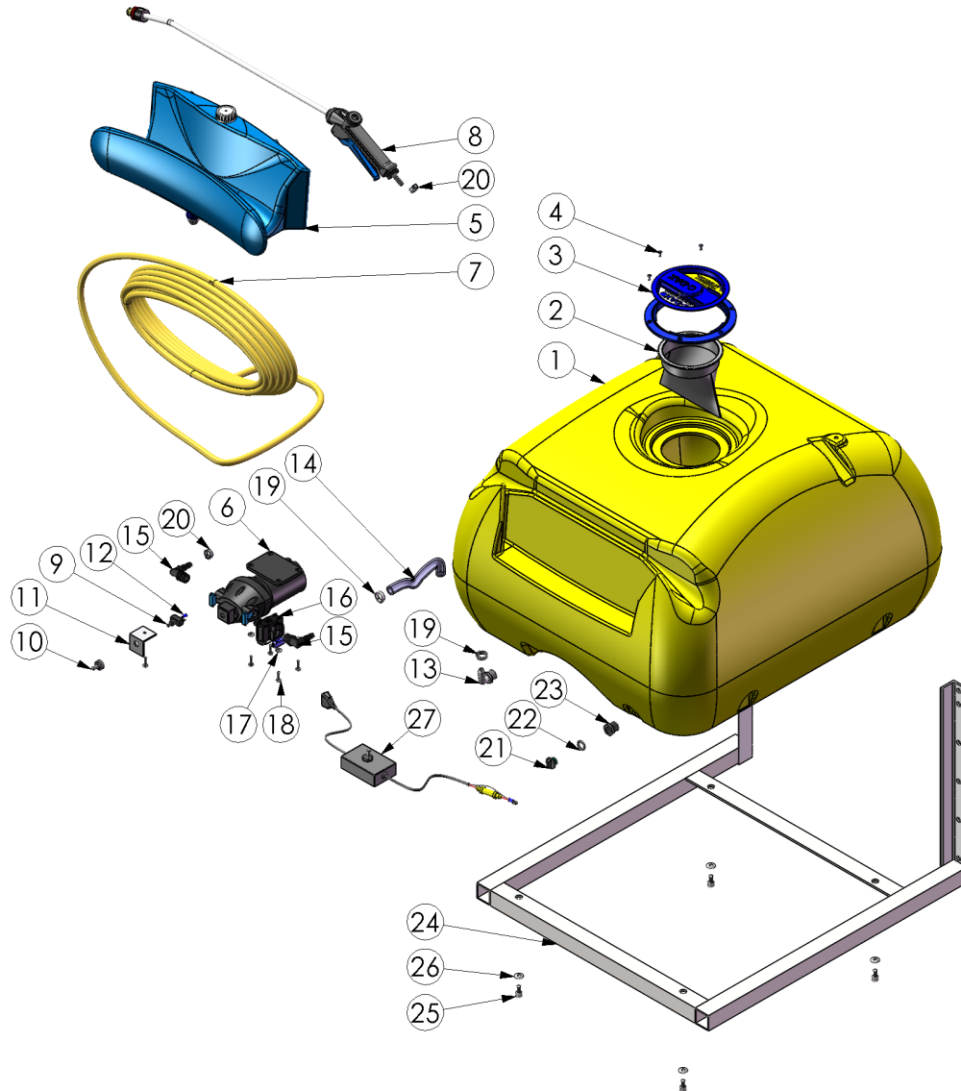
If the pump is observed to be leaking from between the motor and black pump body or from the motor itself, cease operation and have the pump serviced immediately. C-Dax Ltd and their distributors have a comprehensive parts inventory and capable staff. Because of the complications of the pump it may be best to get your C-Dax agent to post it back to the authorised service centre.

TROUBLESHOOTING

C-Dax Ltd and their distributors have a comprehensive parts inventory and capable service staff. Repairs should only be undertaken by C-Dax, or an authorised C-Dax service centre.

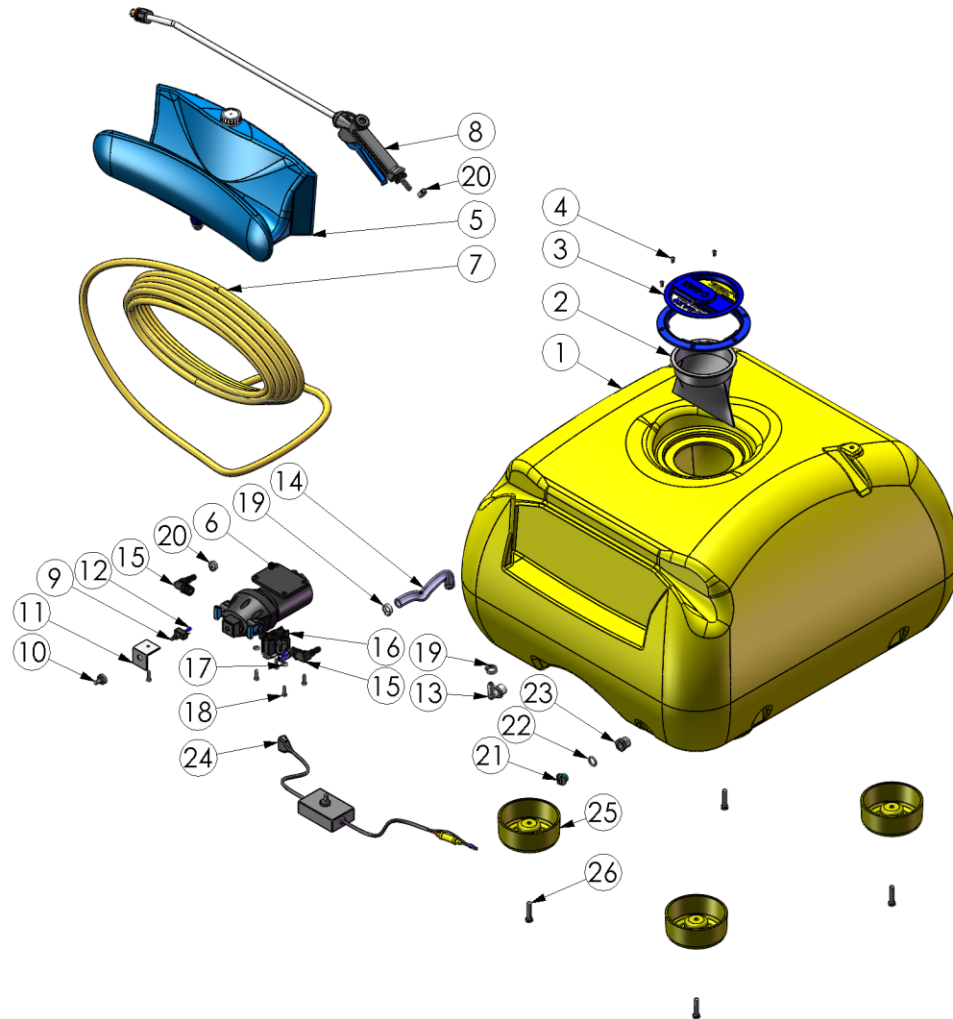
Switch on but pump does not operate	1. Blown fuse	Check wiring and replace 15A fuse
	2. Pressure switch operated	Operate spray gun trigger
	3. Pressure switch failed	Replace pressure switch
	4. On/Off switch failed	Replace switch
Pump runs but does not stop.	1. Spray gun trigger open	Close trigger
	2. Air lock in pump	Operate spray gun trigger until all air is expelled from the pump and hose.
	3. Suction hose loose	Check and tighten all suction hose connections between pump inlet and tank.
	4. Dirt or spray residue in pump valves	Replace valves.
	5. Blocked suction filter mesh	Clean filter mesh.
Pump runs but pulses while pumping	1. Spraying pressure higher than the pump shut off pressure	Reduce spraying pressure by opening the adjustable spray tip.
	2. Pump shut off pressure too low	Increase pump shut off pressure. Refer maintenance.
Fluid leaks from drain holes in pump	1. Internal leak within pump head	Remove pump for servicing.

SO200 (Flat-deck) PARTS DIAGRAM & LIST



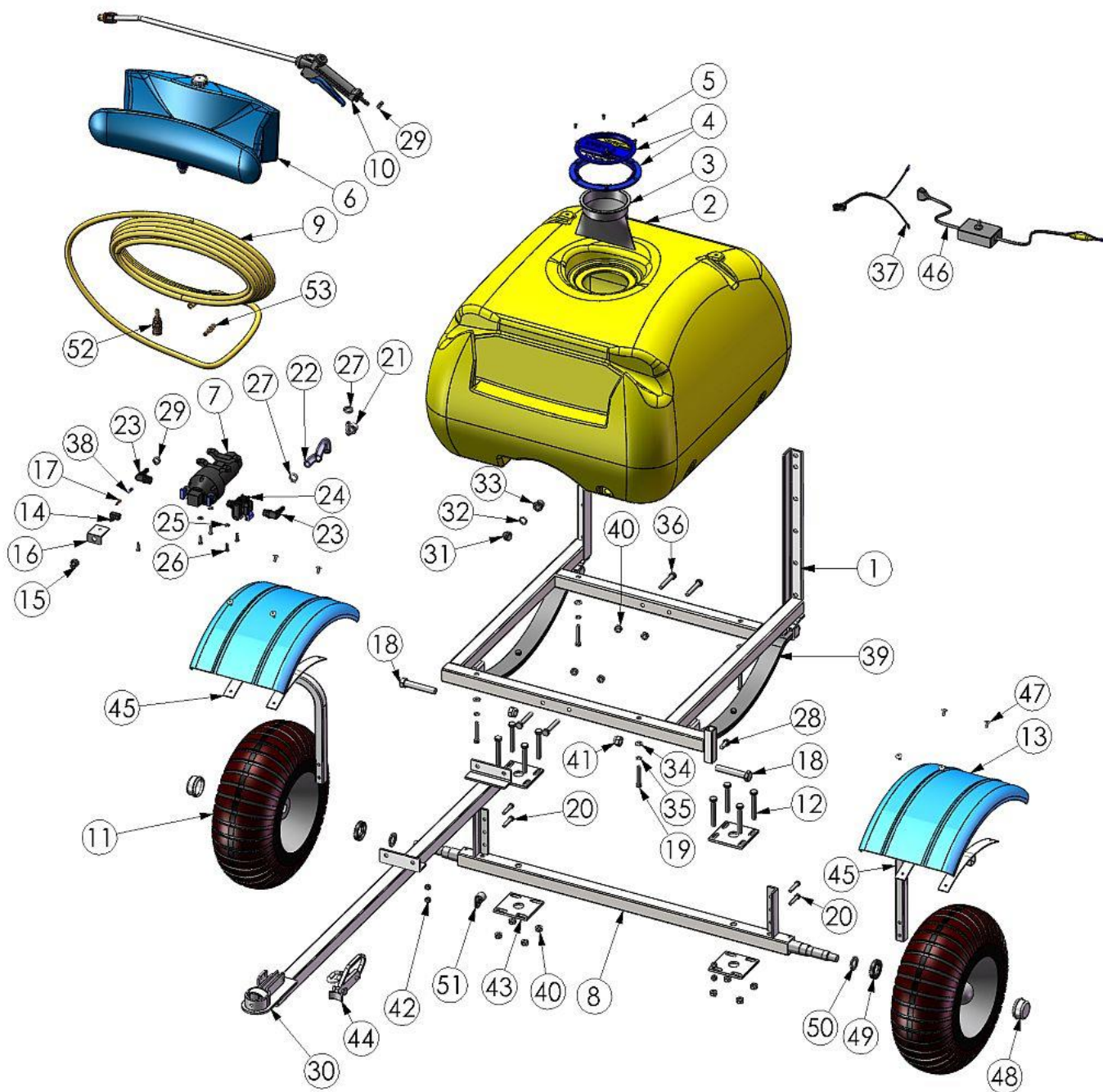
Number	QTY	e9 part no	e9 description
1	1	7500-4150	Rota-Tank-200L-SO200-Yellow-MDPE
2	1	3400-1110	Filter-Basket-D150-Mesh
3	1	8427-6005	Sub-Lid & Ring Assembly-D150-C-Dax Vented-Blue-Nylon
4	6	3270-8012	Fastener-Self Tap-Screw-CSK-8Gx1/2"-Pozi-Stainless
5	1	7500-5050	Rota-Tank-Rinse-SO200-Blue-MDPE
6	1	6800-5500	Pump-Flojet-High Flow-10.9LPM-Quad Ports
7	1	4100-0008	Hose-Spray-Delivery-40 Bar-8.5mm ID-Yellow (10m)
8	1	4000-5000	Hand Gun-SR-Lance-Complete-600mm-Cone Nozzle-Adjustable
9	1	8450-2410	Switch-Electrical-Toggle-SPST-250V-16Amp
10	1	2250-8200	Cover-Switch-Water Proof Boot-Toggle Lever-Rubber-Black
11	1	1300-7200	Bracket-Sprayer Switch-50/100/200L-AL
12	1	8790-8020	Terminal-Spade-Female-6.3mm-Blue
13	1	6200-2450	Pipe-Fitting-Elbow-13 Shankx1/2NPTM-Nylon
14	1	4100-3013	Hose-Suction-Wire Reinforced-13mm ID-Clear Plastic (0.25m)
15	2	6200-2980	Pipe-Fitting-Flojet-Elbow-10 ShankxQuad Port Pump-Nylon
16	1	6800-5150	Pump-Flojet-Triplex-Filter-In Line-Quad Ports
17	4	3310-6005	Fastener-Washer-Flat-M5-ZP
18	5	3110-0520	Fastener-Machine-Screw-Pan-M5x20-Pozi-ZP
19	2	2000-2017	Clamp-Hose-Oetiker-Single Ear Stepless-16.6<>19.8mm-S/S
20	2	2000-2014	Clamp-Hose-Oetiker-Single Ear Stepless-14.5<>7.0mm-S/S
21	1	6200-6260	Pipe-Fitting-Plug-Thumb Screw-3/8BSPM-Black-Plastic
22	1	5450-2220	O'Ring-Imperial-1/8"x5/8"-N70
23	1	6200-7350	Pipe-Fitting-Reducer-1/2NPTMx3/8NPTF-Straight-Plastic
24	1	3500-3785	Frame-Flat Deck-SO200-GL
25	4	2895-0816	Fastener-Cap Head-Allen-Screw-12.9 Grade-M8x16-Galv
26	4	3310-6008	Fastener-Washer-Flat-M8-ZP
27	1	1500-3000	Cable-Electrical-Loom-1 Switch Box-3.0M

SO200 (Spot Sprayer) PARTS DIAGRAM & LIST



Number	QTY	e9 part no	e9 description
1	1	7500-4150	Rota-Tank-200L-SO200-Yellow-MDPE
2	1	3400-1110	Filter-Basket-D150-Mesh
3	1	8427-6005	Sub-Lid & Ring Assembly-D150-C-Dax Vented-Blue-Nylon
4	6	3270-8012	Fastener-Self Tap-Screw-CSK-8Gx1/2"-Pozi-Stainless
5	1	7500-5050	Rota-Tank-Rinse-SO200-Blue-MDPE
6	1	6800-5500	Pump-Flojet-High Flow-10.9LPM-Quad Ports
7	1	4100-0008	Hose-Spray-Delivery-40 Bar-8.5mm ID-Yellow (10m)
8	1	4000-5000	Hand Gun-SR-Lance-Complete-600mm-Cone Nozzle-Adjustable
9	1	8450-2410	Switch-Electrical-Toggle-SPST-250V-16Amp
10	1	2250-8200	Cover-Switch-Water Proof Boot-Toggle Lever-Rubber-Black
11	1	1300-7200	Bracket-Sprayer Switch-50/100/200L-AL
12	1	8790-8020	Terminal-Spade-Female-6.3mm-Blue
13	1	6200-2450	Pipe-Fitting-Elbow-13 Shankx1/2NPTM-Nylon
14	1	4100-3013	Hose-Suction-Wire Reinforced-13mm ID-Clear Plastic (0.25m)
15	2	6200-2980	Pipe-Fitting-Flojet-Elbow-10 ShankxQuad Port Pump-Nylon
16	1	6800-5150	Pump-Flojet-Triplex-Filter-In Line-Quad Ports
17	4	3310-6005	Fastener-Washer-Flat-M5-ZP
18	5	3110-0520	Fastener-Machine-Screw-Pan-M5x20-Pozi-ZP
19	2	2000-2017	Clamp-Hose-Oetiker-Single Ear Stepless-16.6<>19.8mm-S/S
20	2	2000-2014	Clamp-Hose-Oetiker-Single Ear Stepless-14.5<>7.0mm-S/S
21	1	6200-6260	Pipe-Fitting-Plug-Thumb Screw-3/8BSPM-Black-Plastic
22	1	5450-2220	O'Ring-Imperial-1/8"x5/8"-N70
23	1	6200-7350	Pipe-Fitting-Reducer-1/2NPTMx3/8NPTF-Straight-Plastic
24	1	1500-3000	Cable-Electrical-Loom-1 Switch Box-3.0M
25	4	7500-1800	Rota-Foot-Tank Support-SO200 Flat Deck-Yellow-MDPE
26	4	3290-0840	Fastener-Set Screw-Hex-8.8 Grade-M8x40-ZP

SO200T (Trailed) PARTS DIAGRAM



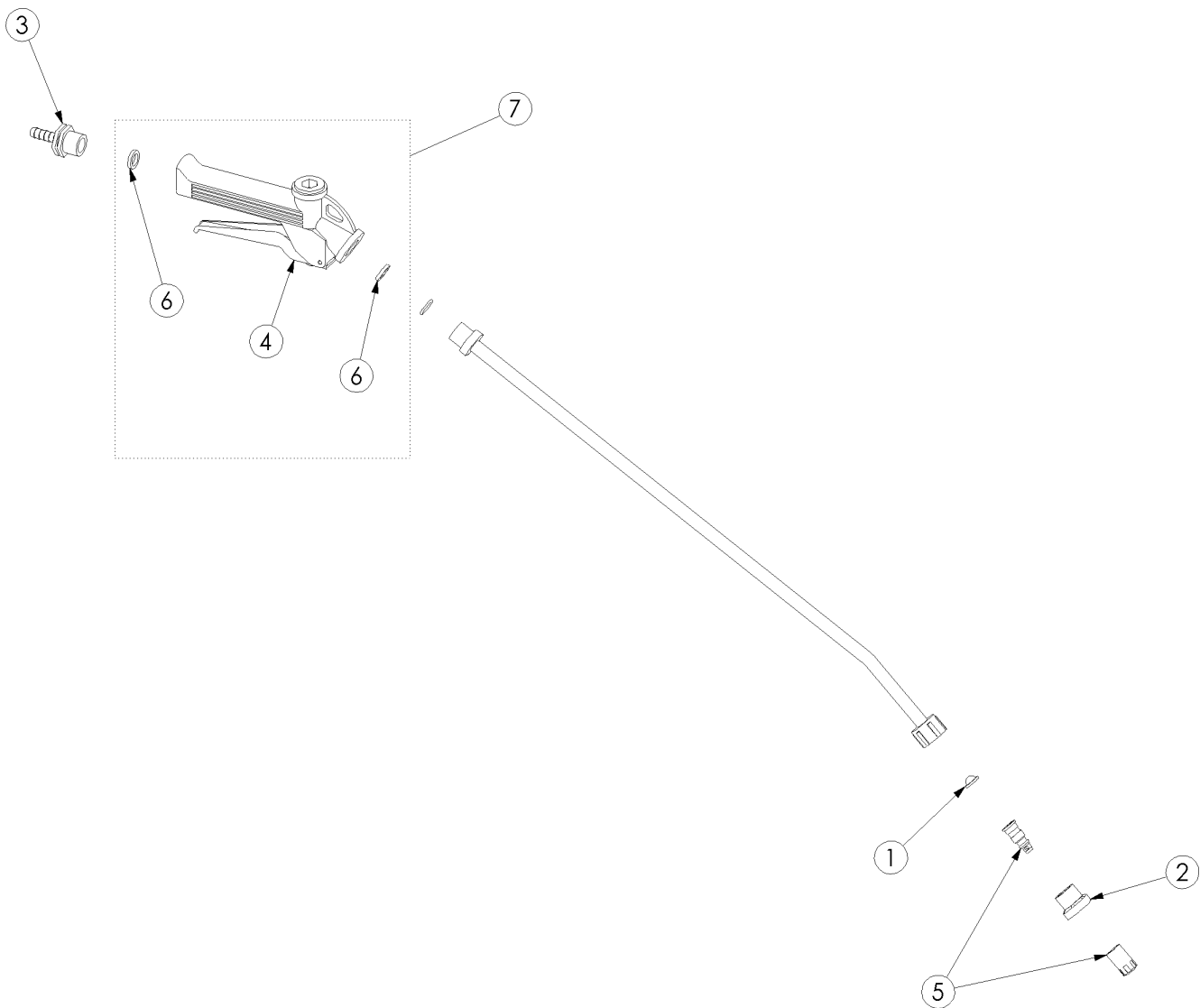
Item 8: Units manufactured prior to Jan 2015 fitted with pump 6800-5000, Pump-Flojet-Triplex-12 Volt-7.6LPM-Quad Ports

SO200T (Trailed) PARTS LIST

Item No.	QTY.	e9 part no	e9 description
1	1	3500-7000	Frame-Trailed-SO200T-Galv
2	1	7500-4150	Rota-Tank-200L-SO200-Yellow-MDPE
3	1	3400-1110	Filter-Basket-D150-Mesh
4	1	8427-6005	Sub-Lid & Ring Assembly-D150-C-Dax Vented-Blue-Nylon
5	6	3270-8012	Fastener-Self Tap-Screw-CSK-8Gx1/2"-Pozi-Stainless
6	1	7500-5050	Rota-Tank-Rinse-SO200-Blue-MDPE
7	1	6800-5500	Pump-Flojet-High Flow-10.9LPM-Quad Ports
8	1	1082-8040	Axle-SO200T-Galv
9	1	4100-0008	Hose-Spray-Delivery-40 Bar-8.5mm ID-Yellow (10m)
10	1	4000-5000	Hand Gun-SR-Lance-Complete-600mm-Cone Nozzle-Adjustable
11	2	9200-8600	Wheel-Turf-Bearing-18x750x8-Tubeless
12	8	2840-1080	Fastener-Bolt&Nut-Hex-8.8 Grade-M10x80-ZP
13	2	7500-2590	Rota-Mudguard-Blue-MDPE-1/4 Circle
14	1	8450-2410	Switch-Electrical-Toggle-SPST-250V-16Amp
15	1	2250-8200	Cover-Switch-Water Proof Boot-Toggle Lever-Rubber-Black
16	1	1300-7200	Bracket-Sprayer Switch-50/100/200L-AL
17	1	8790-8000	Terminal-Spade-Crimp-Insulated-6.3mm-Female-Red
18	2	2840-1690	Fastener-Bolt&Nut-Hex-8.8 Grade-M16x90-ZP
19	4	3290-0855	Fastener-Set Screw-Hex-8.8 Grade-M8x55-ZP
20	4	3290-0840	Fastener-Set Screw-Hex-8.8 Grade-M8x40-ZP
21	1	6200-2450	Pipe-Fitting-Elbow-13 Shankx1/2NPTM-Nylon
22	1	4100-3013	Hose-Suction-Wire Reinforced-13mm ID-Clear Plastic (0.25m)
23	2	6200-2980	Pipe-Fitting-Flojet-Elbow-10 ShankxQuad Port Pump-Nylon
24	1	6800-5150	Pump-Flojet-Triplex-Filter-In Line-Quad Ports
25	4	3310-6005	Fastener-Washer-Flat-M5-ZP
26	5	3110-0520	Fastener-Machine Screw-Pan-M5x20-Pozi-ZP
27	2	2000-2017	Clamp-Hose-Oetiker-Single Ear Stepless-16.6<>19.8mm-S/S
28	1	3290-1025	Fastener-Set Screw-Hex-8.8 Grade-M10x25-ZP
29	2	2000-2014	Clamp-Hose-Oetiker-Single Ear Stepless-14.5<>7.0mm-S/S
30	1	2550-8000	Drawbar-SO200T-Galv
31	1	6200-6260	Pipe-Fitting-Plug-Thumb Screw-3/8BSPM-Black-Plastic
32	1	5450-2220	O'Ring-Imperial-1/8"x5/8"-N70
33	1	6200-7350	Pipe-Fitting-Reducer-1/2NPTMx3/8NPTF-Straight-Plastic
34	4	3310-6008	Fastener-Washer-Flat-M8-ZP
35	4	3330-8008	Fastener-Washer-Spring-M8-ZP
36	4	2840-1065	Fastener-Bolt-Hex-8.8 Grade-M10x65-ZP
37	1	1500-6500	Cable-Electrical-Loom-Sprayer 50/100/Sprayon 200/SM50-Flojet
38	1	8790-8020	Terminal-Spade-Female-6.3mm-Blue
39	2	8250-8502	Spring-Trailer-50mm Wide-2 Leaf-250Kg
40	12	3170-0010	Fastener-Nut-Nyloc-M10-ZP
41	2	3170-0016	Fastener-Nut-Nyloc-M16-ZP
42	4	3170-0008	Fastener-Nut-Nyloc-M8-ZP
43	4	6500-6400	Profiled-Plate-Universal Mount-Black-Steel
44	1	8800-3800	Tow-Coupling-Handle-Double Ended-1 78 x 50mm-ZP
45	2	1300-6900	Bracket-Mudguard-Spray On-Galv
46	1	1500-3000	Cable-Electrical-Loom-1 Switch Box-3.0M
47	8	3240-0018	Fastener-Rivet-Blind-Truss Head-3/16x18mm-Aluminium
48	2	9200-9000	Wheel-Sundry-Cap-Grease-Plastic
49	2	9200-9002	Wheel-Sundry-Seal-Universal
50	2	9200-9003	Wheel-Sundry-Washer-Stub Axle-3/4"-Heavy
51	1	2050-5600	Clip-P Type-Bracket-19mm-Steel ZPG
52	1	6200-7250	Pipe-Fitting-Quick Release-Valve-Stopx8.5 Shank-Brass
53	1	6200-7210	Pipe-Fitting-Quick Release-Male Connectorx8.5 Shank-Brass

Item 8: Units manufactured prior to Jan 2015 fitted with pump 6800-5000, Pump-Flojet-Triplex-12 Volt-7.6LPM-Quad Ports

HGSR SPRAYGUN PARTS DIAGRAM

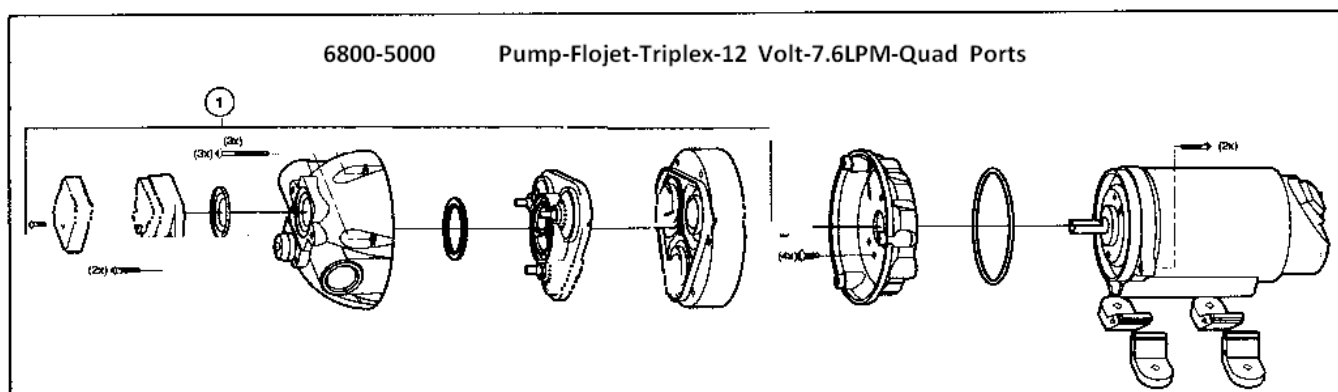


Item No.	QTY.	e9 part no	e9 description
1	1	4000-5028	Hand Gun-SR-Nozzle Filter-Mesh Cup-Stainless
2	1	4000-5030	Hand Gun-SR-Nozzle Nut-Red-Polypropylene
3	1	4000-5020	Hand Gun-SR-Connector-Hose-Shank 10mmx1/2BSPM-Black-Nylon
4	1	4000-5024	Hand Gun-SR-Handle With Blue Trigger-25 Bar-1/2"BSPF
5	1	4000-5026	Hand Gun-SR-Nozzle Adjustable-Cone-2mm-Brass
6	2	4000-5042	Hand Gun-SR-Washer-Gasket-19x12x3mm-White-Nylon
7	1	4000-5022	Hand Gun-SR-Handle Assembly w/shank-HGSR

FLOJET SPRAY PUMP RELACEMENT PARTS

The following replacement parts for the **12V Flojet 7.6 L/Min pump** are available from any C-Dax dealer:
This diagram is for 7.6L/min pump only, units manufactured prior to Jan 2015.

PLEASE NOTE THAT NO REPLACEMENT PARTS AVAILABLE FOR THE 10.9LPM PUMP



NOTE
 Please select the correct hose connection type for your pump

The below pictures show the quadport type (Left hand photo) and threaded type (Right hand photo). The threaded type is no longer available for ordering and should be replaced with a quadport type. When replacing a threaded pump head with a quadport type you will require replacement quadport hose fittings in addition to the pump head.

Quadport Type:



Screw Type:



ITEM	PART NO.	DESCRIPTION
1	6800-5160	Pumphead Kit (includes pressure switch) To Suit Quadport Type
	6800-5000	Replacement Pump Quadport Type
	6200-2980	Pipe-Fitting-Flojet-Elbow-10-13mm ShankxQuad Port Pump-Nylon
	6200-3020	Pipe-Fitting-Flojet-Straight-10-13mm ShankxQuad Port Pump-Plastic